

# GEORGIOS BATSELAS:

*“My passion for cars and watches has been with me since a very young age and I feel very fortunate working with one of my passions.”*

In 2009, Tony Frank has moved to the Bukowski's Auctions, and the new Evaluation Expert for watches at Kaplans Auctions Company became Georgios Batselas.

From my collection of watches, it lacked Patek Philippe, and at Kaplan's they had on auction one Patek Philippe with diamonds very, very beautiful, which did not seem very expensive either. I was not present in Stockholm, however I called them, because at Kaplan's one can bid by phone too, and the one I spoke with was Georgios Batselas, who managed that auction by phone. One year later, I offered him to have a conversation concerning his passion for watches. So, I have send him some questions, and his answers to them I am publishing below.

*Silvia Constantinescu: Georgios Batselas, I would like to introduce you to my readers. Please speak about yourself and your job.*

Georgios Batselas: I'm 40 years old, born and raised in Stockholm, Sweden. My passion for cars and watches has been with me since a very young age, and I feel very fortunate working with one of my passions.

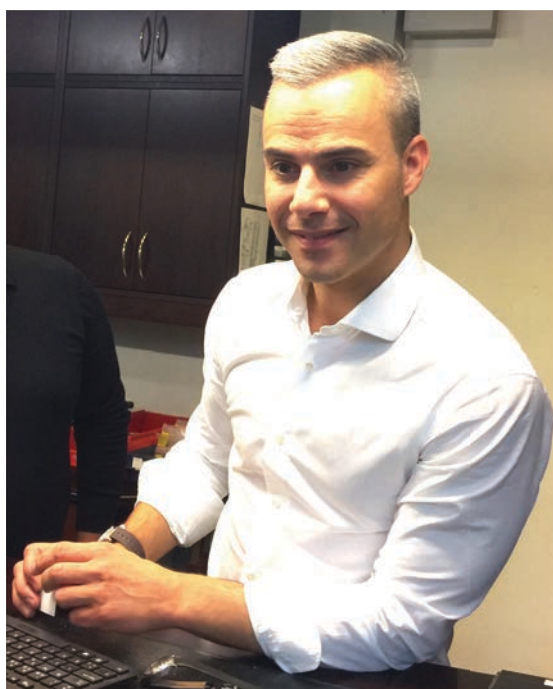
*S.C.: Georgios Batselas, you are born in Sweden, however your name is Greek. Are your parents Greeks? If yes, do you speak Greek?*



VACHERON & CONSTANTIN, Genève, ladies' wristwatch, 24 mm, Cal 1003, Serial no. 585781, Ref no. 6924, Case no. 410889, 18K gold, manual winding, sapphire crystal, integrated original bracelet, length 179-184 mm, total weight 43,6 gram, approx. 1970.

Procured from Kaplans® Auctions.  
Photo: © Kaplans® Auktioner.

G.B.: Yes, my parents are from Greece, and I do speak Greek. I have all my family and relatives there, but I do visit them often and



“I'm not a watchmaker, but I have a lot of experience working half my life with watches”, says Georgios Batselas, Head of Watch Department, Watch Specialist.  
Photo: Octavian Ciupitu / © CR.

have a close connection with friends and all my relatives.



CARTIER, Pasha, Cal 053, Case nr. 1991/0888/30009, Chronograph, men's watch, 38,5 mm, 18K gold, quartz, sapphire glass (damaged), datum, damaged dial, integrated leather bracelet, clasp of 18K gold, ca 1995.  
Photo: © Kaplans® Auktioner.

*S.C.: I love the Greek mythology and I consider that every educated person no mater he or she is a believer, they have to know the Greek mythology, and the Bible, which laying at the ground of the European culture. Do you know the Greek mythology?*

G.B.: During my childhood years in Sweden a went to Greek school at six years old – in Sweden school starts at seven years old. When I then started in the Swedish

school I continued in Greek school two days a week in evenings and Saturdays. Later when I got older I did the Greek military, so I can say that I do know some things about the Old Country.

*S.C.: How and why did you begin working for Kaplan's Auctions?*

G.B.: I began working in retail with different watch brands in 1999, and i 2008 the opportunity working with older and vintage watches came up at Kaplans. Now I have worked with watches half of my life, and since 2016 I'm the head of the Watch Department.

*S.C.: What education, or experience, do you have concerning the trade of horology?*

G.B.: I'm not a watchmaker, but I have a lot of experience working half my life with watches. To come in my position you learn by doing, because there is no school education for what I do.

*S.C.: Here at Kaplan's Auctions there is no such things as new watches, here you deal almost only with old watches. What is the difference between brand new watches and the old ones?*

G.B.: With older watches, you have to have knowledge about them. It's difficult without haven't seen many, and my job is just that - valuating all kinds of watches, from pocket watches that are a couple of hundred years old, to brand new wrist watches.



PATEK PHILIPPE, Genève, ladies' wristwatch, 16 mm, Serial no. 987411, Ref no. 3282, Case no. 2636294, 18K gold, manual winding, sapphire crystal, brilliant bezel (20 pcs, approx. TW-W/VS, approx. 0.50 ctv.), integrated original bracelet, length 170 mm, total weight 54,3 grams, approx. 1960.

Purchased from Georgios Batselas at Kaplans® Auctions.

Photo: Silvia Constantinescu / © CR.